

Surname	Centre Number	Candidate Number
Other Names		0



GCSE – NEW

3100UB0-1



S19-3100UB0-1

HISTORY

Unit 1: Study in Depth

Wales and the Wider Perspective

1B. Radicalism and Protest, 1810-1848

MONDAY, 3 JUNE 2019 – MORNING

1 hour

For Examiner's use only		
Question	Maximum Mark	Mark Awarded
1.	4	
2.	6	
3.	12	
4.	12	
5.	16	
SPaG	3	
Total	53	

INSTRUCTIONS TO CANDIDATES

Use black ink or black ball-point pen. Do not use pencil or gel pen. Do not use correction fluid.

Write your name, centre number and candidate number in the spaces at the top of this page.

Answer ALL the questions on the examination paper.

Write your answers in the spaces provided in this booklet. If you run out of space, use the additional page(s) at the back of this booklet, taking care to number the question(s) correctly.

INFORMATION FOR CANDIDATES

The number of marks is given in brackets at the end of each question.

Question 5 will assess your ability to construct a balanced, reasoned and well-substantiated extended response.

In addition, your answer to question 5 will assess your ability to spell, punctuate and use grammar accurately and use a wide range of specialist language as appropriate.



JUN193100UB0101

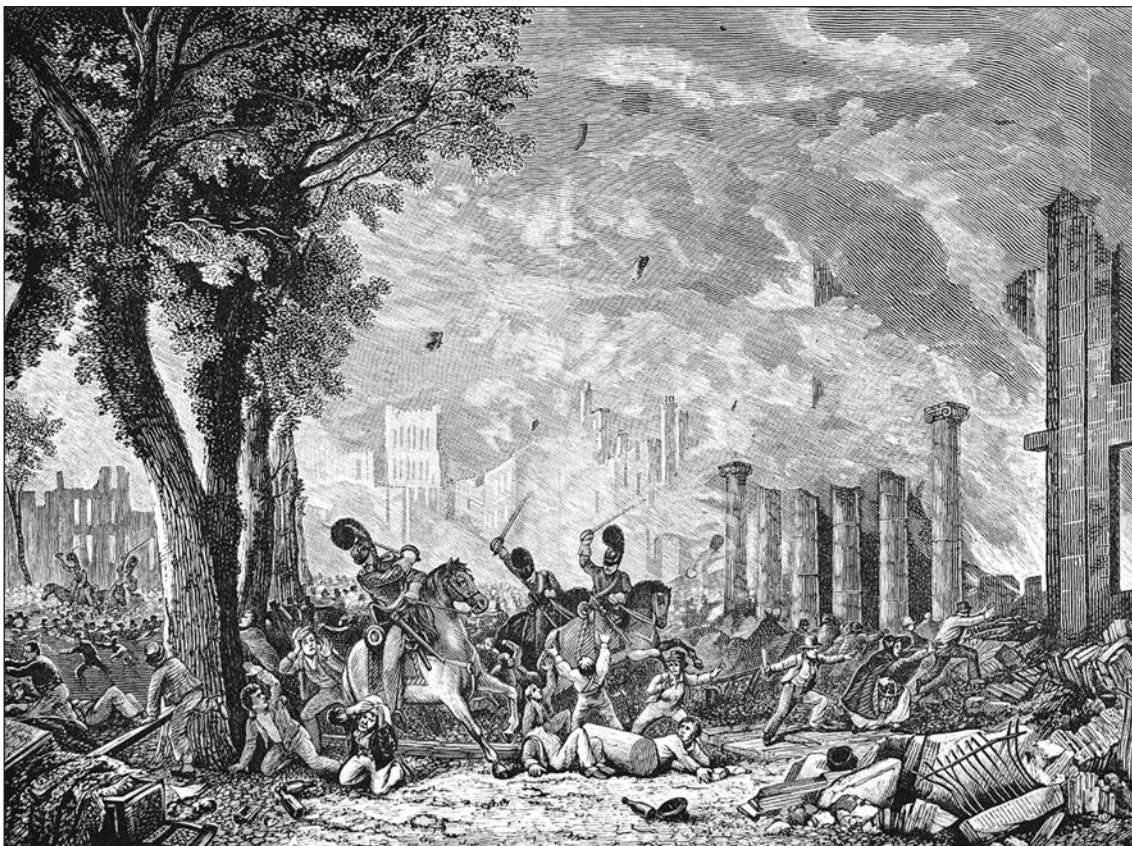
Answer all questions.

QUESTION 1

This question is about the early outbreaks of protest.

Study the sources below and then answer the question which follows.

Source A



[An illustration of a protest in support of political reform, 1831]

Source B

FRAME-BREAKING

£200 Reward

On Thursday night a great number of men armed with pistols, hammers and clubs entered the workshop of Mr George Ball, a framework-weaver. They hid their faces with masks and violently attacked Mr Ball and destroyed all the machinery in the workshop.

[A notice offering a reward for any information leading to the arrest of Luddites]



Examiner
only

What can be learnt from Sources A and B about the main forms of early protest? [4]

.....

.....

.....

.....

.....

.....

.....

.....

.....

.....

.....

.....

.....

.....

.....

.....

.....

.....

.....

.....

.....

.....

3100UB01
03

4





Examiner
only

3100UB01
05

2
4

Total

--





Examiner only

Area with horizontal dotted lines for writing.

3100UB01
07

4
8

Total



Examiner
only

Area with horizontal dotted lines for writing.

2
10

Total

--



Examiner
only

A large rectangular area containing 25 horizontal dotted lines for writing.



Examiner
only

.....

.....

.....

.....

.....

.....

.....

END OF PAPER

4

12

Total

SPaG

3



BLANK PAGE

**PLEASE DO NOT WRITE
ON THIS PAGE**



BLANK PAGE

**PLEASE DO NOT WRITE
ON THIS PAGE**

